

# M.V. Arklow River

Port of Registry Rotterdam, Netherlands  
 Call Sign P.B.F.X.  
 IMO No. 9238404  
 MMSI No. 245358000  
 Inmarsat-C (Telex) +(581) 425048810  
 +(581) 425048811  
 Email PBFX@globeemail.com  
 GSM telephone (Dutch) + (31) 6 20 38 80 06

Yard Barkmeijer Stroobos, Holland  
 Year of Build 2003  
 Class Bureau Veritas  
 Class Notation +I 3/3E+CARGOSHIP DEEP SEA  
 +MACH+AUT-MS Heavy Cargo BRG  
 Class No. 01875Q  
 Official No. 22381 Z 2009



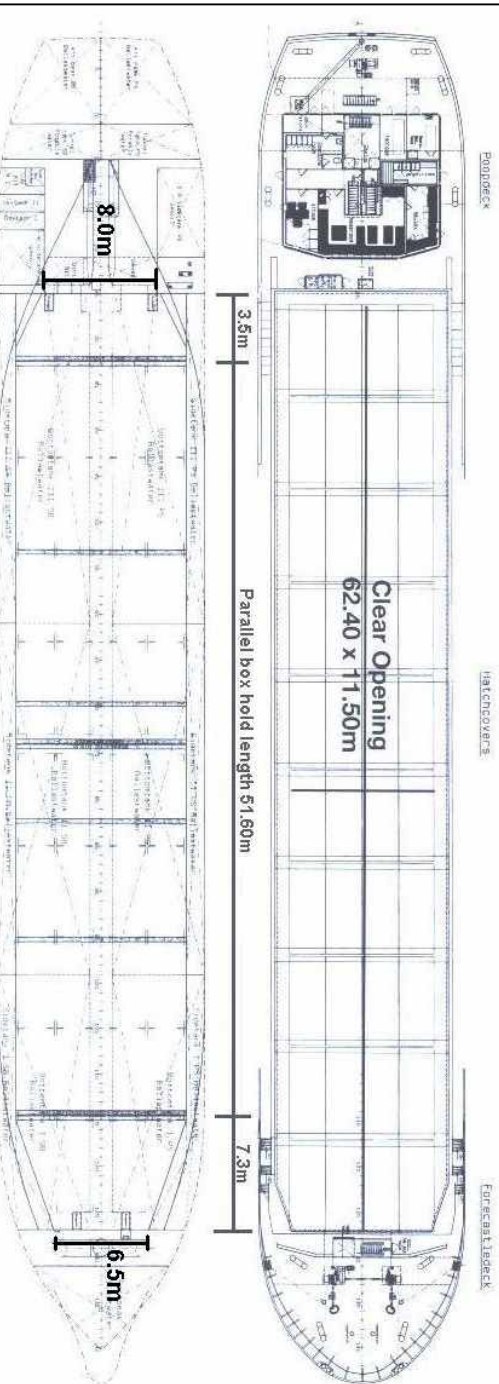
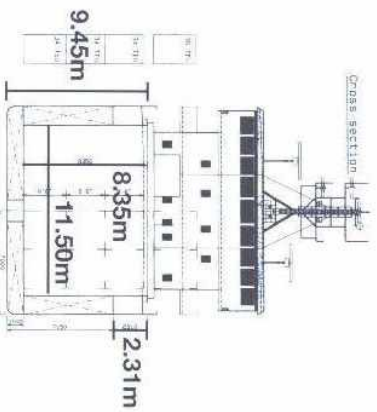
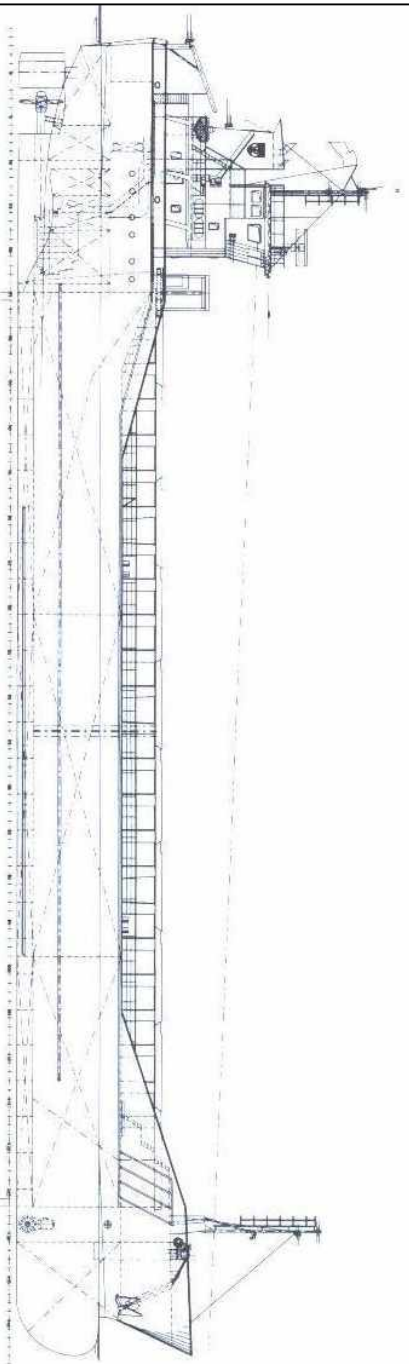
## Principal Particulars

Length OA 89.99m  
 Length BP 84.98m  
 Breadth Mld 14.00m  
 Breadth Ext 14.18m  
 Depth Mld 7.15m  
 Summer Load Draft 5.679m  
 Min. air draft is 20.60m  
 at max. ballast draft of 4.40m  
 min. coaming ht above waterline 6.40m  
 GT 2999  
 NT 1639  
 Displacement 5906t  
 Total Deadweight 4485t  
 Ballast 1945m<sup>3</sup>  
 Fuel – HFO 121.28m<sup>3</sup>  
 Fuel - GO 35.84m<sup>3</sup>  
 Fresh Water 88m<sup>3</sup>  
 Lub Oil 13m<sup>3</sup>

**Hold Capacity:** Grain & Bale  
 Incl. bulkheads 207391 ft<sup>3</sup>/5873 m<sup>3</sup>  
 B/H stowed midships 206541 ft<sup>3</sup>/5849 m<sup>3</sup>  
 Portable bulkheads (2) may be placed in  
 9 positions for cargo separation  
 Cargo hold fitted with dehumidifier  
**Containers:** **TEU**  
 Hold 102  
 Deck 36  
**Hatches:** Roden Staal pontoon system  
 Maximum hatch top loading 1.5t/m<sup>2</sup>  
 Maximum tank top loading 15.0t/m<sup>2</sup>  
 Bottom strengthened for loading aground  
 Tank top strengthened for heavy cargoes  
 Engine room bulkhead A60 insulated  
 CO<sub>2</sub> fire extinguishing system in hold  
 Certified for the carriage of dangerous  
 goods of IMO Class 4.1, 4.2, 4.3, 5.1  
 and 5.2 (packaged)

**Main Engine:**  
 MaK 6M25 1499kW with Scana Volda  
 gearbox and controllable pitch propeller  
**Auxiliaries:**  
 2x Valmet 634DSIG 150kW 1500rpm  
**Generators:**  
 2 x Stamford UCM274 H 175kVA  
 1 x shaft alternator HCM534D2 435kVA  
**Speed:** 11.5 knots  
**Consumption:**  
 In port – abt. 0.75t Gas Oil per day  
 At sea – 7.50t HFO per day  
**Equipment:**  
 GMDSS (A3), 2x radars, navtex,  
 echo sounder, speed/distance log,  
 2x GPS receivers,  
 gyro/magnetic compass.A/P  
 1x bow thrusters 250kW

# Arklow River



Length with bulkheads stowed fwd 54.40m  
 Length with bulkheads stowed aft 57.50m  
 Length with 1 bulkhead stowed fwd and aft 50.50m