

# M.V. Arklow Rainbow

Port of Registry	Arklow	Yard	Barkmeijer Stroobos, Holland
Call Sign	E I C L	Year of Build	2006
IMO No.	9344497	Class	Bureau Veritas
MMSI No.	250000040	Class Notation	+ I 3/3E + CARGOSHIP DEEP SEA + MACH + AUT-MS Heavy Cargo BRG
Inmarsat-C (Telex)	+(581)425000088 +(581)425000089	Class No.	07978Y
Email	425000088@stratosmobile.net	Official No.	403348
GSM telephone (Irish)	+ 353 (87) 6744253		

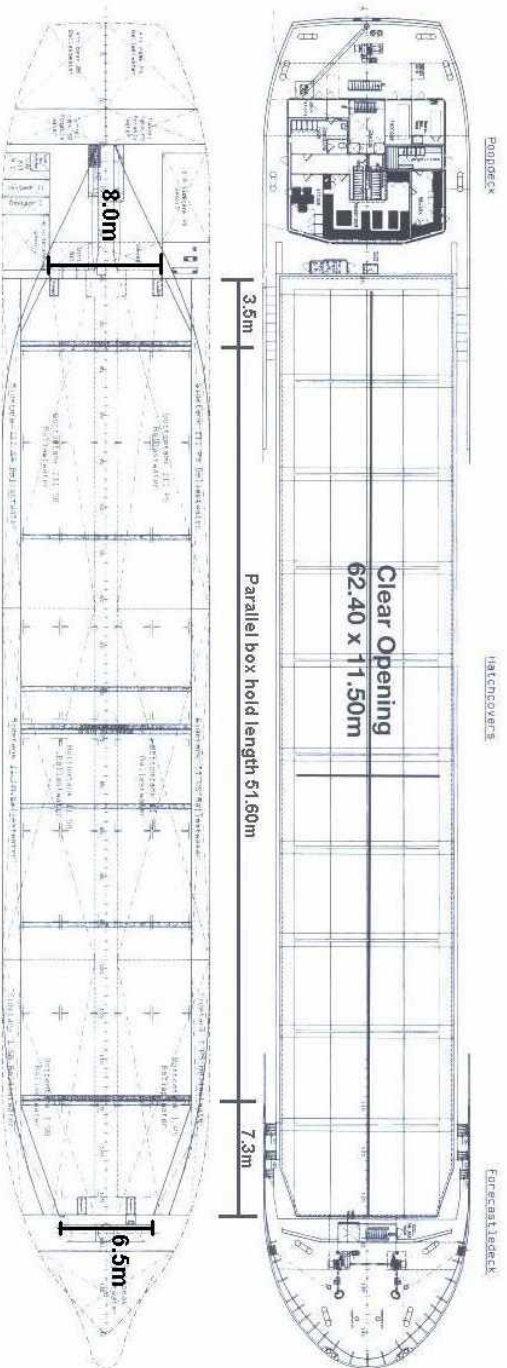
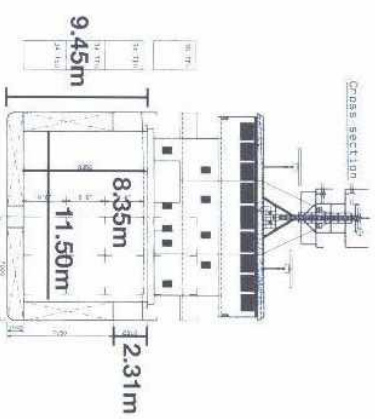
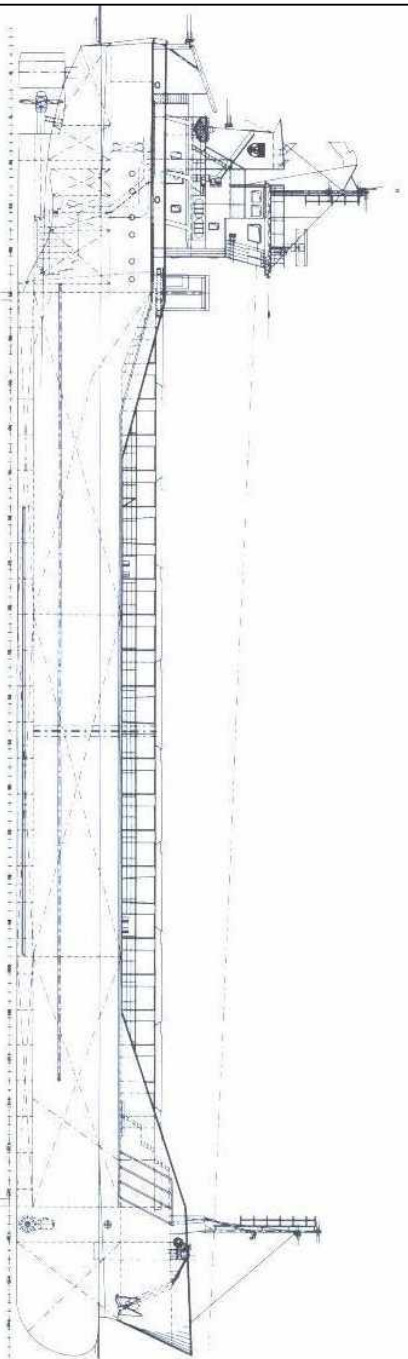


## Principal Particulars

Length OA	89.99m	<b>Hold Capacity:</b> Grain & Bale	<b>Main Engine:</b>
Length BP	84.98m	Incl. bulkheads 207391 ft <sup>3</sup> /5873 m <sup>3</sup>	MaK 6M25 1499kW with Scana Volda
Breadth Mid	14.00m	B/H stowed midships 206541 ft <sup>3</sup> /5849 m <sup>3</sup>	Gearbox and controllable pitch propeller
Breadth Ext	14.18m	Portable bulkheads (2) may be placed in	<b>Auxiliaries:</b>
Depth Mid	7.15m	9 positions for cargo separation	2 x Sisu Diesel 645BDBIC 200kW 1500rpm
Summer Load Draft	5.679m	<b>Containers:</b> <b>TEU</b>	<b>Generators:</b>
Min. airdraft is	20.60m	Hold 102	2 x Stamford 215kVA
at max. ballast draft of	4.40m	Deck 36	1 x shaft alternator M8BM315MB4 400kVA
min. coaming ht above waterline	6.40m	<b>Hatches:</b> Roden Staal pontoon system	<b>Speed:</b> abt. 11.5knots
GT	2999	Maximum hatch top loading 1.5t/m <sup>2</sup>	<b>Consumption:</b>
NT	1635	Maximum tank top loading 15mt/m <sup>2</sup>	In port – abt. 0.75t Gas Oil per day
Displacement	5906t	Bottom strengthened for loading aground	At sea – abt. 7.50t HFO per day
Total Deadweight	4485t	Tank top strengthened for heavy cargoes	<b>Equipment:</b>
Ballast	1839m <sup>3</sup>	Engine room bulkhead A60 insulated	GMDSS (A3), 2x radars, navtex,
Fuel - HFO	150.52m <sup>3</sup>	CO <sub>2</sub> fire extinguishing system in hold	echosounder, speed/distance log
Fuel – GO	36.42m <sup>3</sup>	Engine room fitted with CO <sub>2</sub> and flexi-fog	2x GPS receivers, A/P,
Fresh Water	88m <sup>3</sup>	Certified for the carriage of dangerous	gyro/magnetic compasses,
Lub Oil	8m <sup>3</sup>	goods of IMO Class 4.1, 4.2, 4.3, 5.1	1x electric bowthrustrer 250kW
<b>29/09/2010</b>		and 5.2 (packaged)	

E. & O. E.

# Arklow Rainbow



Length with bulkheads stowed fwd 54.40m  
 Length with bulkheads stowed aft 57.50m  
 Length with 1 bulkhead stowed fwd and aft 50.50m