

M.V. Arklow Raider



Port of Registry	Arklow	Yard	Barkmeijer Stroobos, Holland
Call Sign	E I X S	Year of Build	2007
IMO No.	9344540	Class	Bureau Veritas
MMSI No.	250001268	Class Notation	I + HULL + MACH + AUT-UMS
Inmarsat-C (Telex)	+(581) 425000234		MON-SHAFT STRENGTHBOTTOM
	+(581) 425000235		
Email	425000234@stratosmobile.net	Class No.	07983E
GSM telephone (Irish)	+ 353 (87) 9213735	Official No.	404061



© Bert van der Kuijl

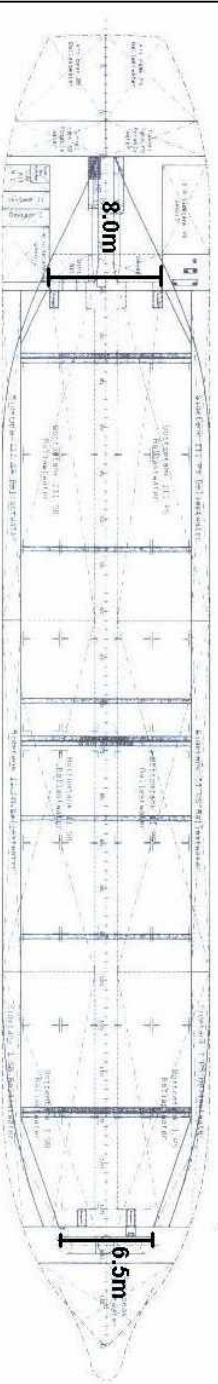
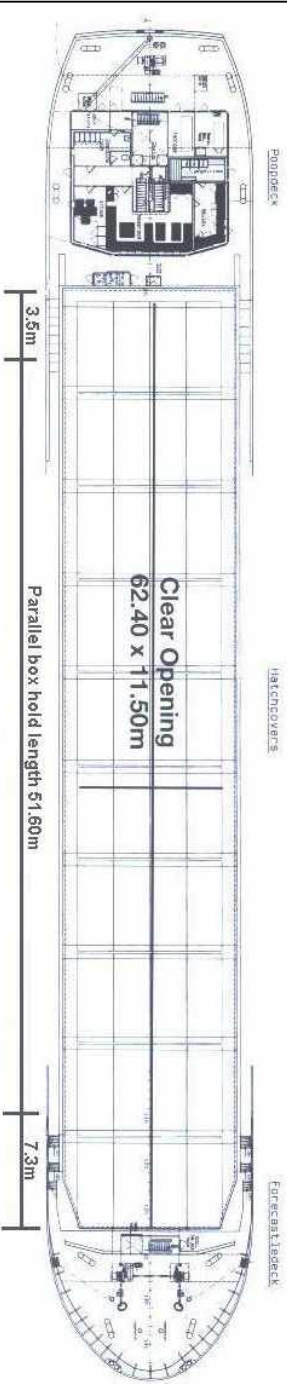
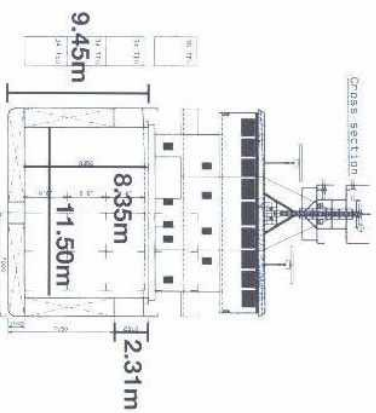
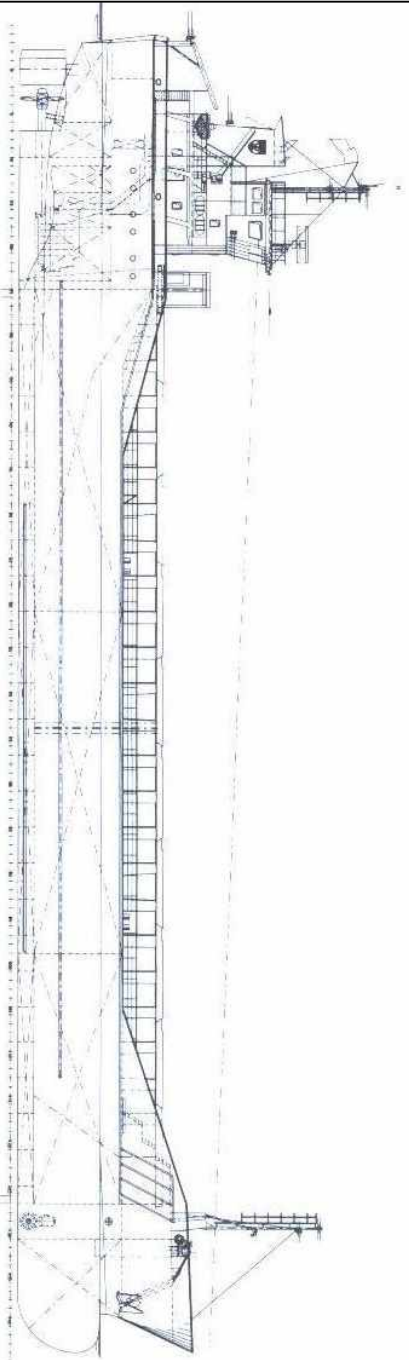
Photo shows mv Arklow Raven (sister ship)

Photo courtesy of Bert van der Kuijl

Principal Particulars

Length OA	89.99m	Hold Capacity: Grain & Bale	Main Engine:
Length BP	84.98m	Incl. bulkheads 207391 ft ³ /5873 m ³	MaK 6M25 1499kW with Scana Volda
Breadth Mid	14.00m	B/H stowed midships 206541 ft ³ /5849 m ³	Gearbox and controllable pitch propeller
Breadth Ext	14.18m	Portable bulkheads (2) may be placed in	Auxiliaries:
Depth Mid	7.15m	9 positions for cargo separation	2 x Sisu Diesel 645BSBIG 180kW 1500rpm
Summer Load Draft	5.679m	Containers:	Generators:
Min. airdraft is	20.60m	Hold 102	2 x Stamford 210Kva
at max. ballast draft of	4.40m	Deck 48	1 x shaft alternator M8BM315MB4 400kVA
min. coaming ht above waterline	6.40m	Hatches: Roden Staal pontoon system	Speed: abt. 11.5knots
GT	2999	Maximum hatch top loading 1.5t/m ²	Consumption:
NT	1639	Maximum tank top loading 15mt/m ²	In port – abt. 0.75t Gas Oil per day
Displacement	5906t	Bottom strengthened for loading aground	At sea – abt. 7.50t HFO per day
Total Deadweight	4485t	Tank top strengthened for heavy cargoes	Equipment:
Ballast	1839m ³	Engine room bulkhead A60 insulated	GMDSS (A3), 2x radars, navtex,
Fuel – HFO	150.52m ³	CO ₂ fire extinguishing system in hold	echosounder, speed/distance log
Fuel – GO	36.42m ³	Engine room fitted with CO ₂ and flexi-fog	2x GPS receivers, A/P,
Fresh Water	88m ³	Certified for the carriage of dangerous	gyro/magnetic compasses,
Lub Oil	8m ³	goods of IMO Class 4.1, 4.2, 4.3, 5.1	1x electric bowthrustrer 250kW
29/09/2010		and 5.2 (packaged)	

Arklow Raider



Length with bulkheads stowed fwd 54.40m
 Length with bulkheads stowed aft 57.50m
 Length with 1 bulkhead stowed fwd and aft 50.50m