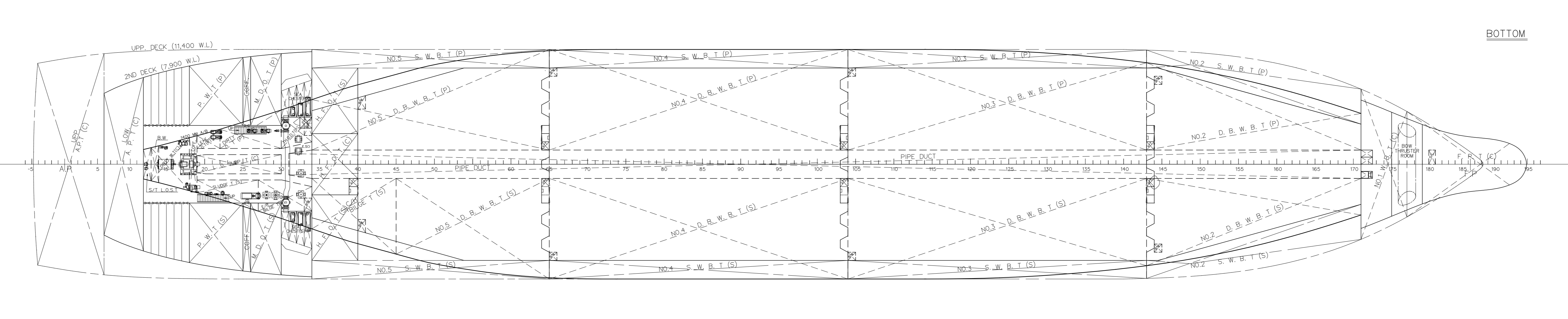
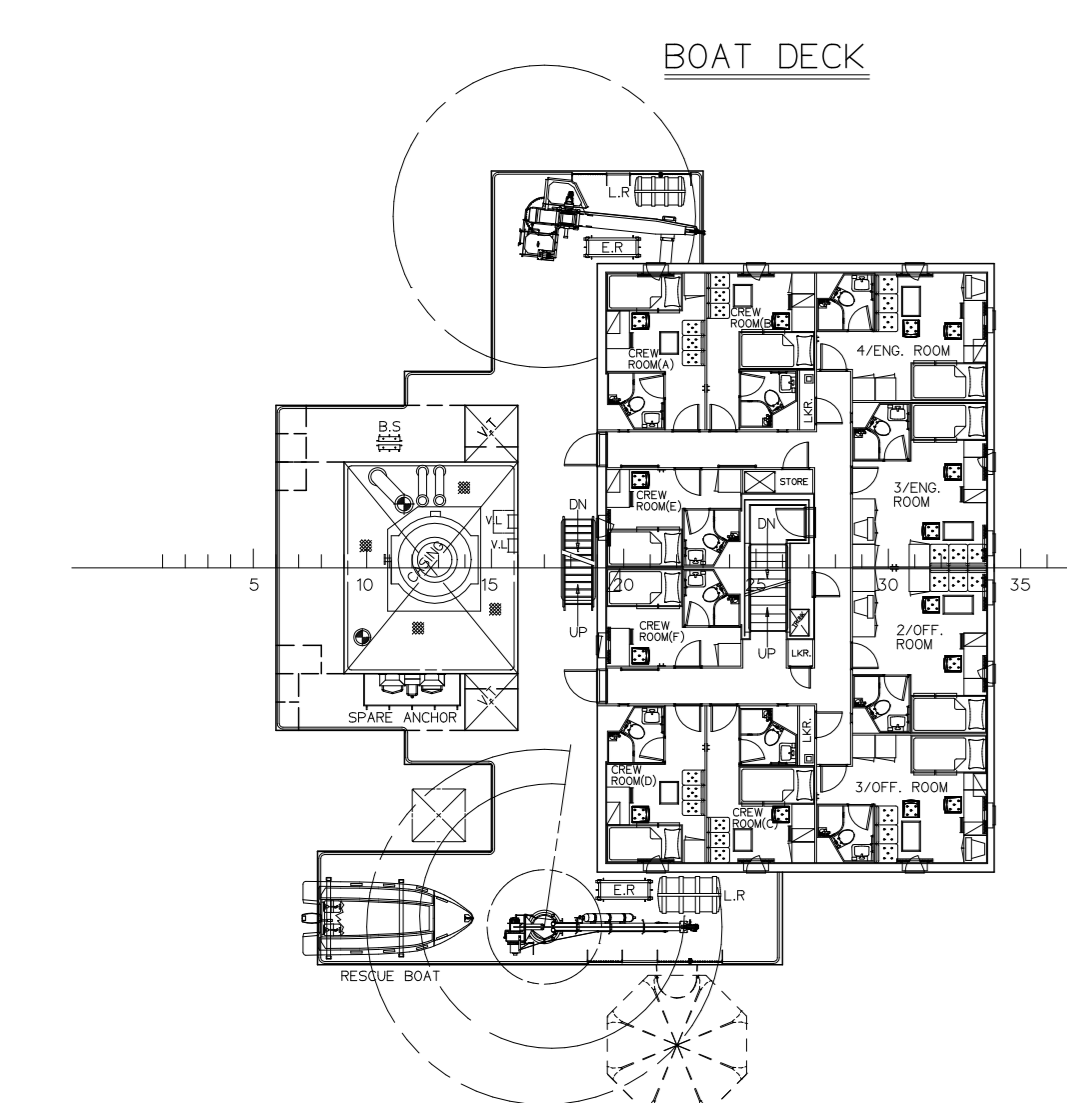
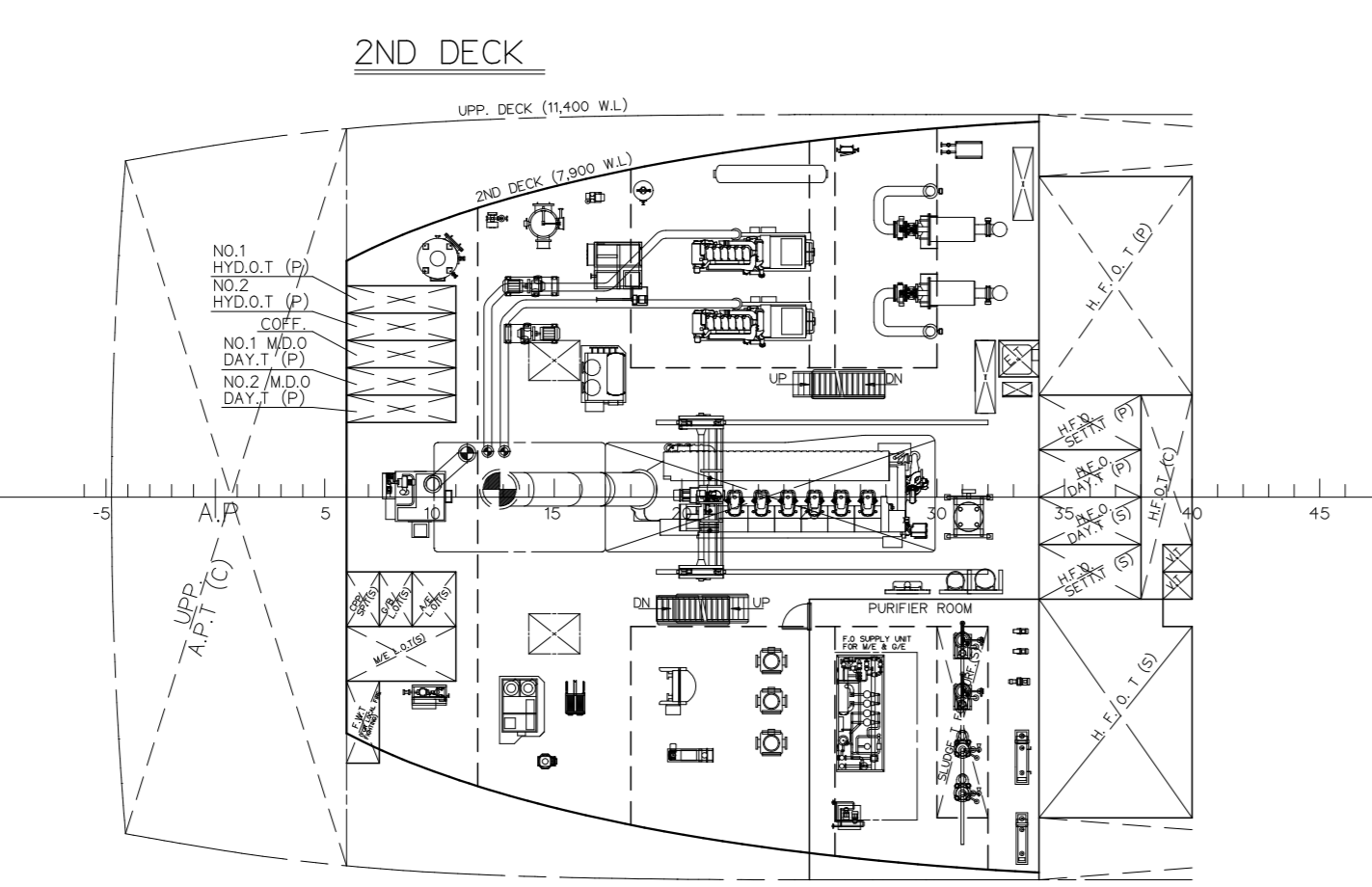
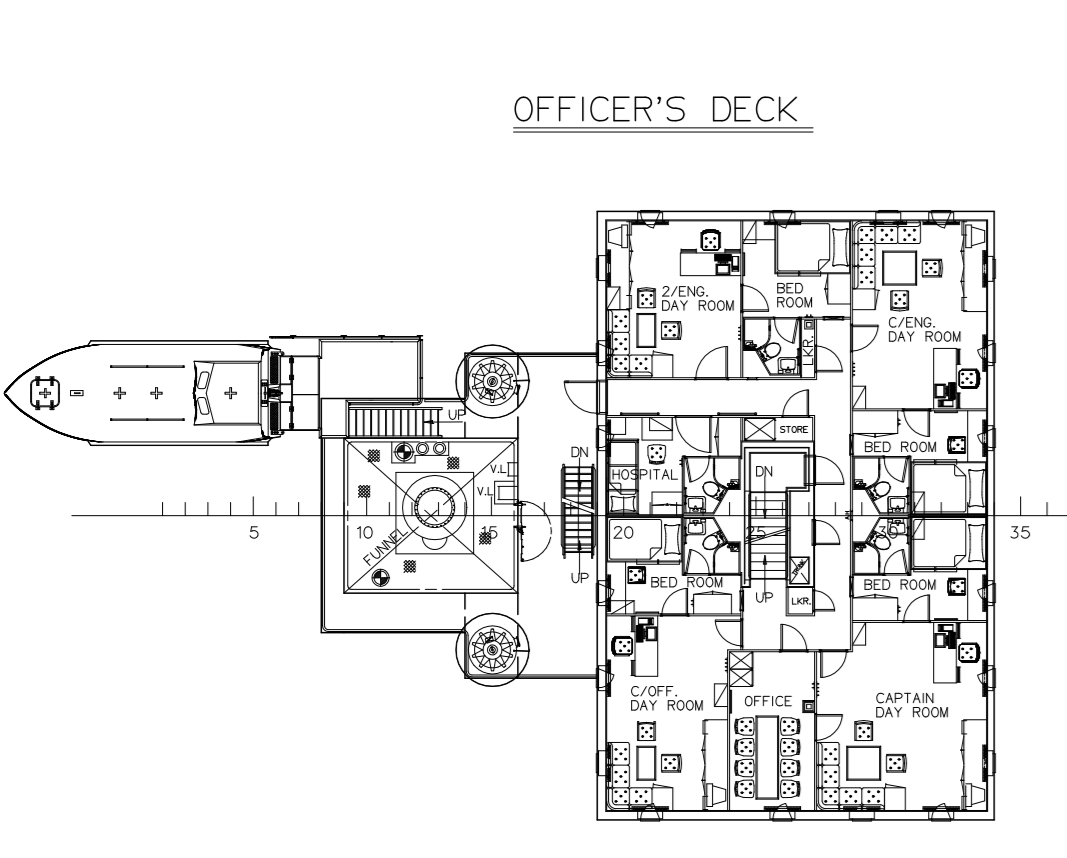
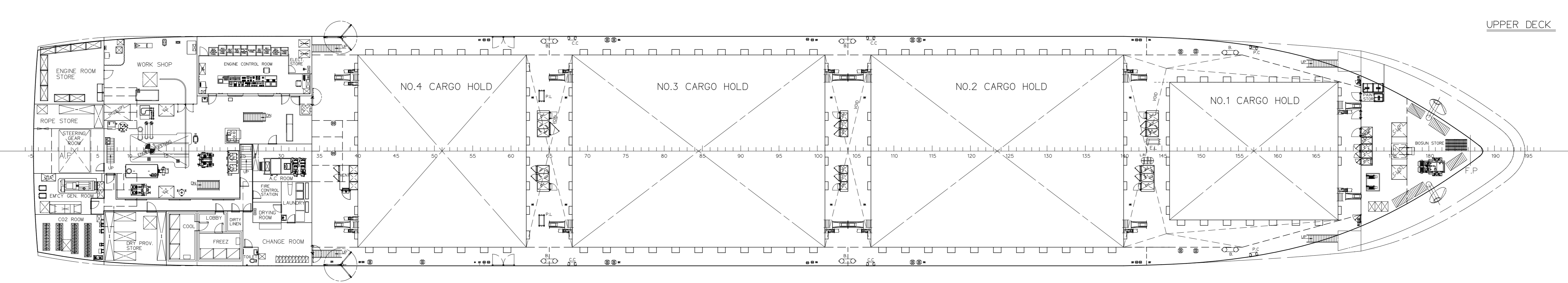
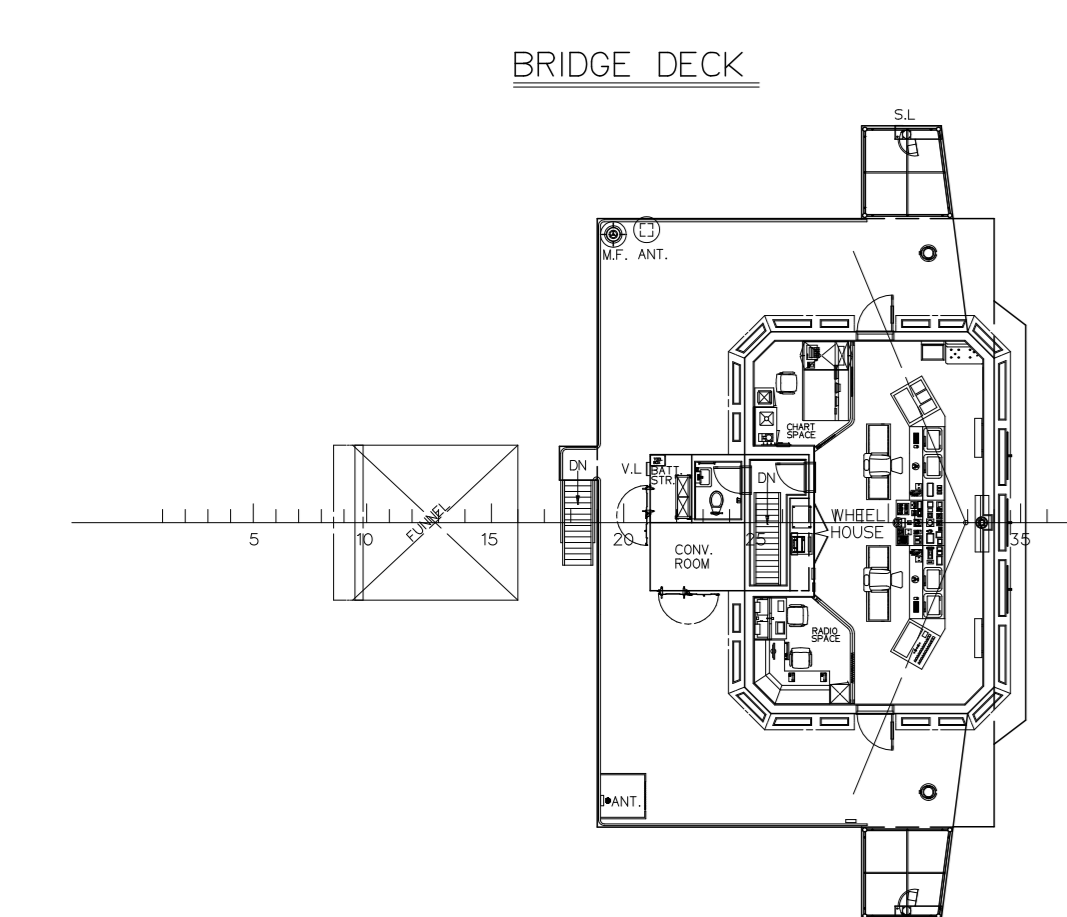
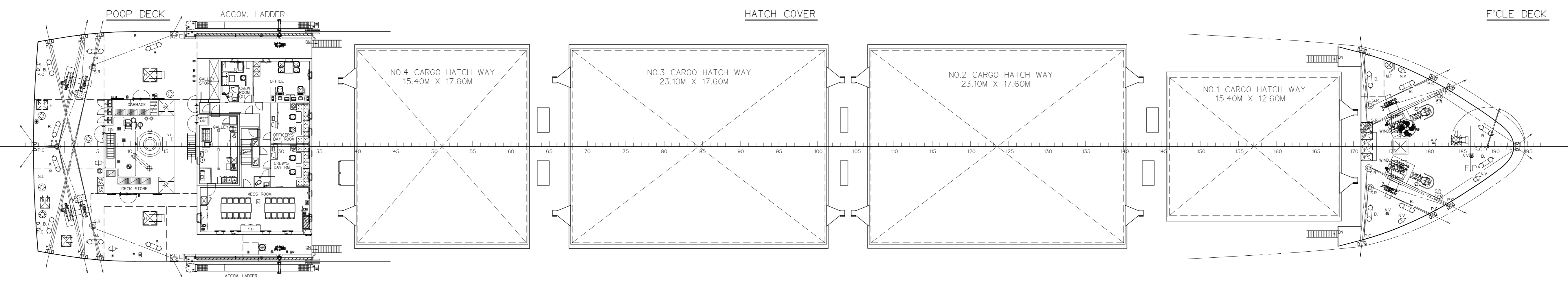
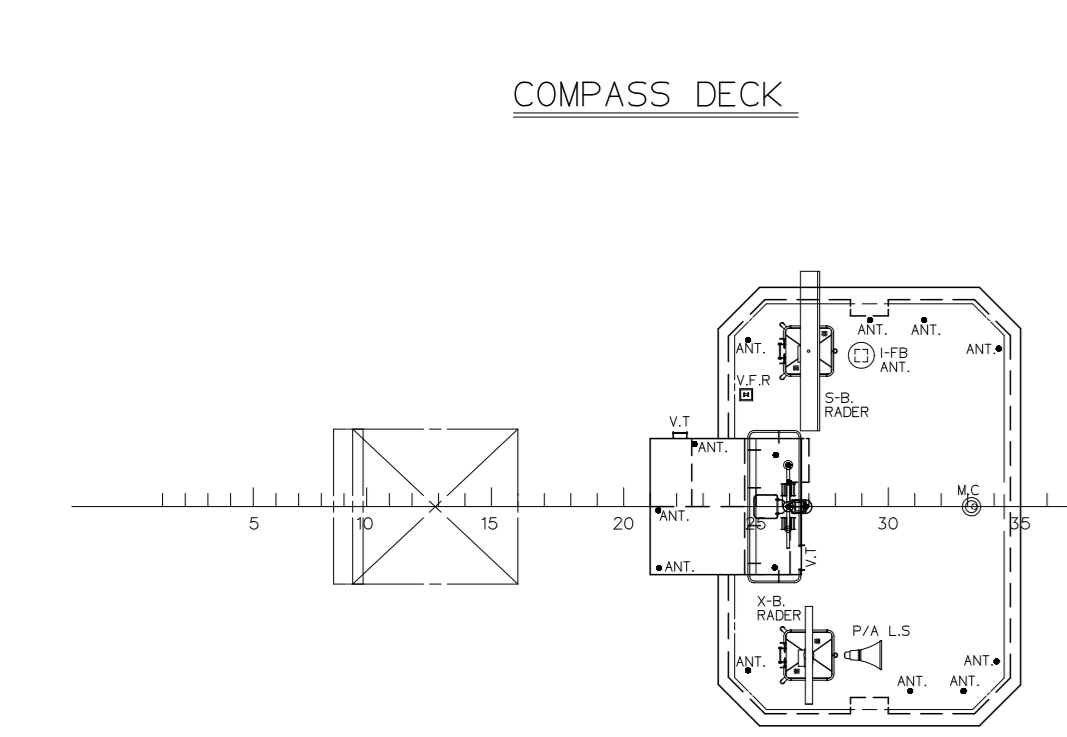
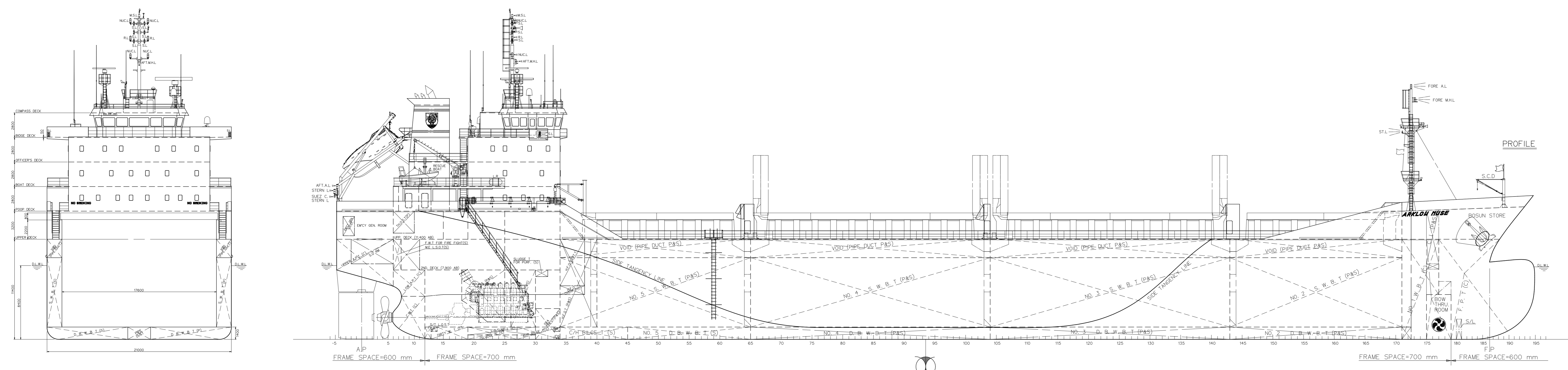


DRAWING HISTORY				
REV	REVISED BY	REVISION	REMARKS	
O	OWNERS COMMENT	DI	DESIGN IMPROVEMENT	
C	CLASS COMMENT	DM	DESIGN MISTAKE	
A	AUTHORITY COMMENT	DA	DETAIL ARRANGEMENT	
M	MAKER'S RECOMMENDATION	DO	OTHER DESIGN PART	
Y	YARD IMPROVEMENT			
DATE	REV. NO.	REV. DATE	REVISION	REMARKS
AUG. 8, 2013	0		AS FINAL PLAN FOR SB540	



PRINCIPAL PARTICULARS

LENGTH (O.A)	136.47	M
LENGTH (B.P)	128.50	M
BREADTH (MLD)	21.00	M
DEPTH (MLD)	11.40	M
DRAFT (EXT) (DESIGN)	8.415	M
DRAFT (EXT) (SCANT.)	8.495	M

FREEBOARD : "B" TYPE  
FLAG : IRELAND

MAIN ENGINE :  
TYPE : Msk 6M43 C  
MCR : 5,400 KW at 500 RPM  
NCR : 4,590 KW at 500 RPM

CLASSIFICATION : BV  
HULL, GENERAL CARGO SHIP,  
HEAVY CARGO (CARGO HOLDS, 196.2 kv/m )  
UNRESTRICTED NAVIGATION, INWATERSURVEY  
MACH, AUT-UMS, MON-SHAFT

SHIP NO.	IMO NO.	FINAL PLAN
SB540	9509487	
Approved By	J. H. KIM	Ship No. SB 540
Approved By	W. S. KIM	M/V ARKLOW MUSE
Checked By	S. C. LEE	Scale 1/200
Drawing By	S. C. LEE	Owner ARKLOW
		Date AUG. 8, 2013
		Rev. No. 0
		Case 2810100188