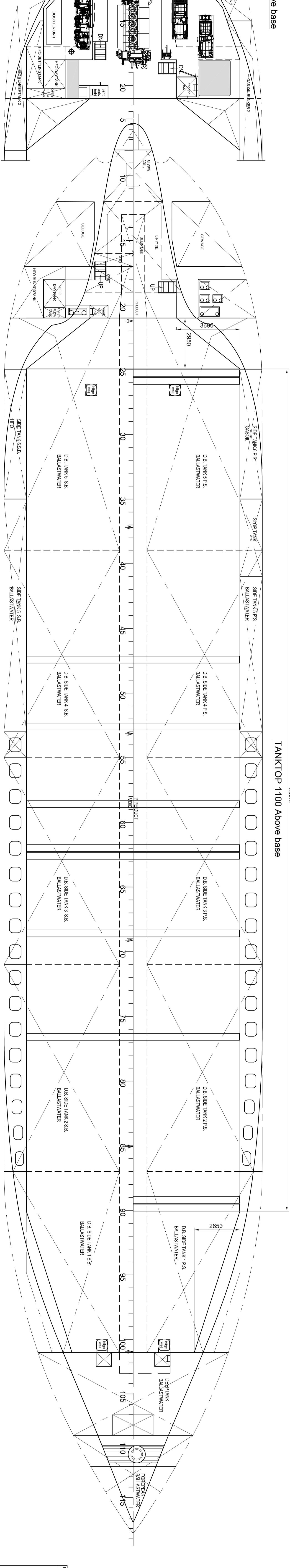
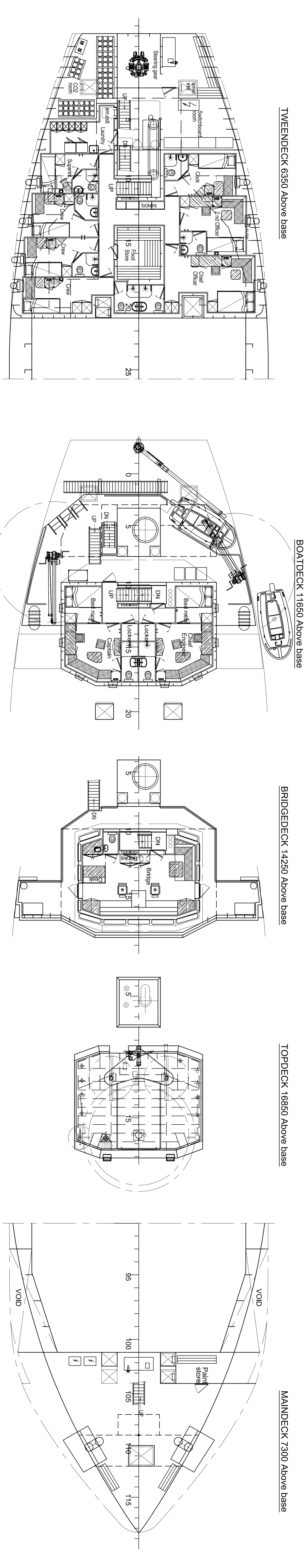


DECK 12000 Above base



**MAIN PARTICULARS**

Length over all	86,93 m.
Length between Perpendiculars	84,98 m.
Length acc. Ioadline	84,98 m.
Breadth moulded	15,00 m.
Depth	7,15 m.
Design draught	abt. 6,35 m.
* Deadweight	abt. 5100 ton
* Hold capacity	221.000 cbt.
Tanktop area	6693 m <sup>2</sup>
Tonnage (acc. conv. 1989)	2999 GT

**Tank capacities : IFO**

Gasoil	abt. 109 m <sup>3</sup>
Fresh water	abt. 32 m <sup>3</sup>
Ballastwater	abt. 1870 m <sup>3</sup>

**Main Engine : Mak 6M25**

Power	1740 kW
Trial Speed	abt. 12,5 Kn

\* = Grains/bushels not on board

**GENERAL ARRANGEMENT 5100 DWT**

08-07-2015

**BODENWES**

Royal Docking  
The Netherlands  
+31 598 301317  
info@bodenwes.com  
www.bodenwes.com

General Arrangement 5100 Dwt  
DRAWING NUMBER: 725-000-001  
DATE: 18-06-2015