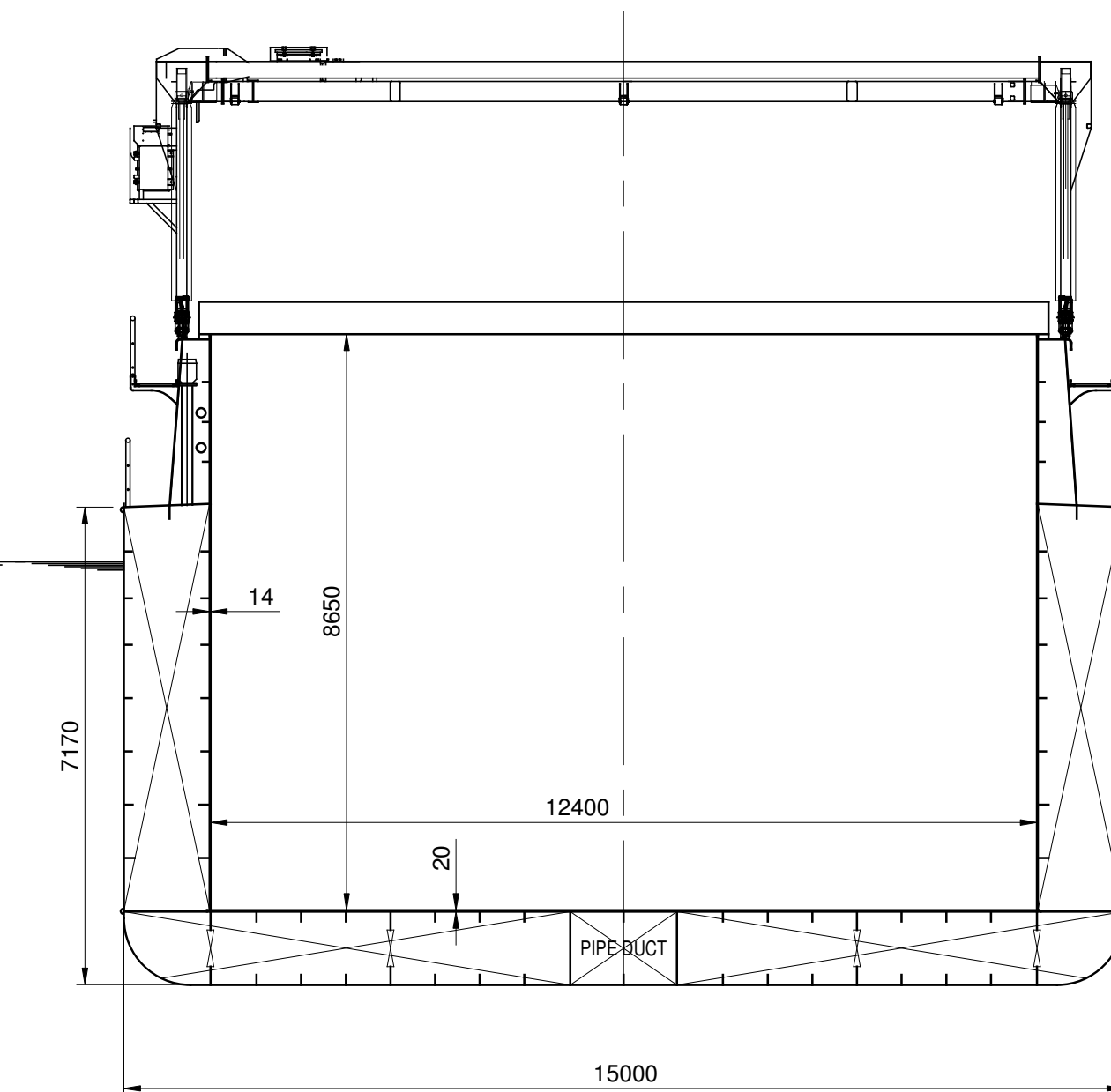
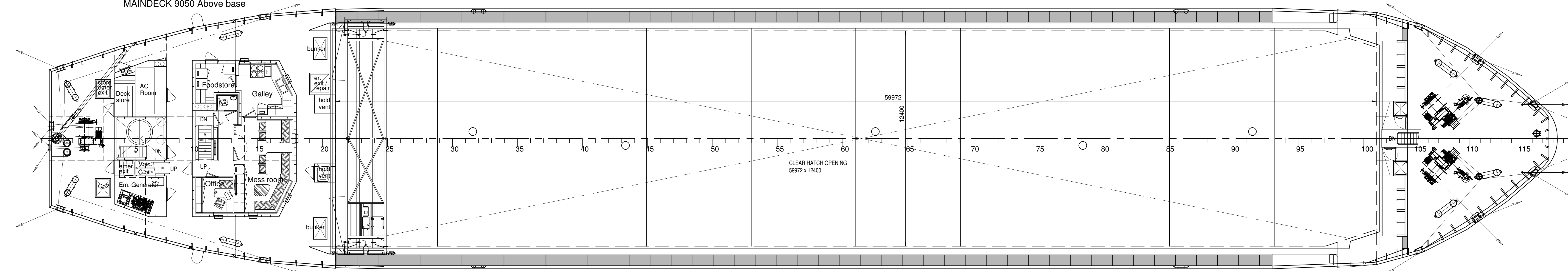


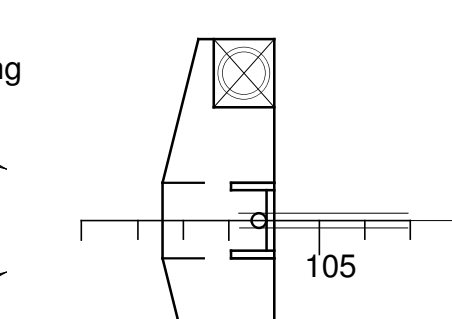
CROSS SECTION.



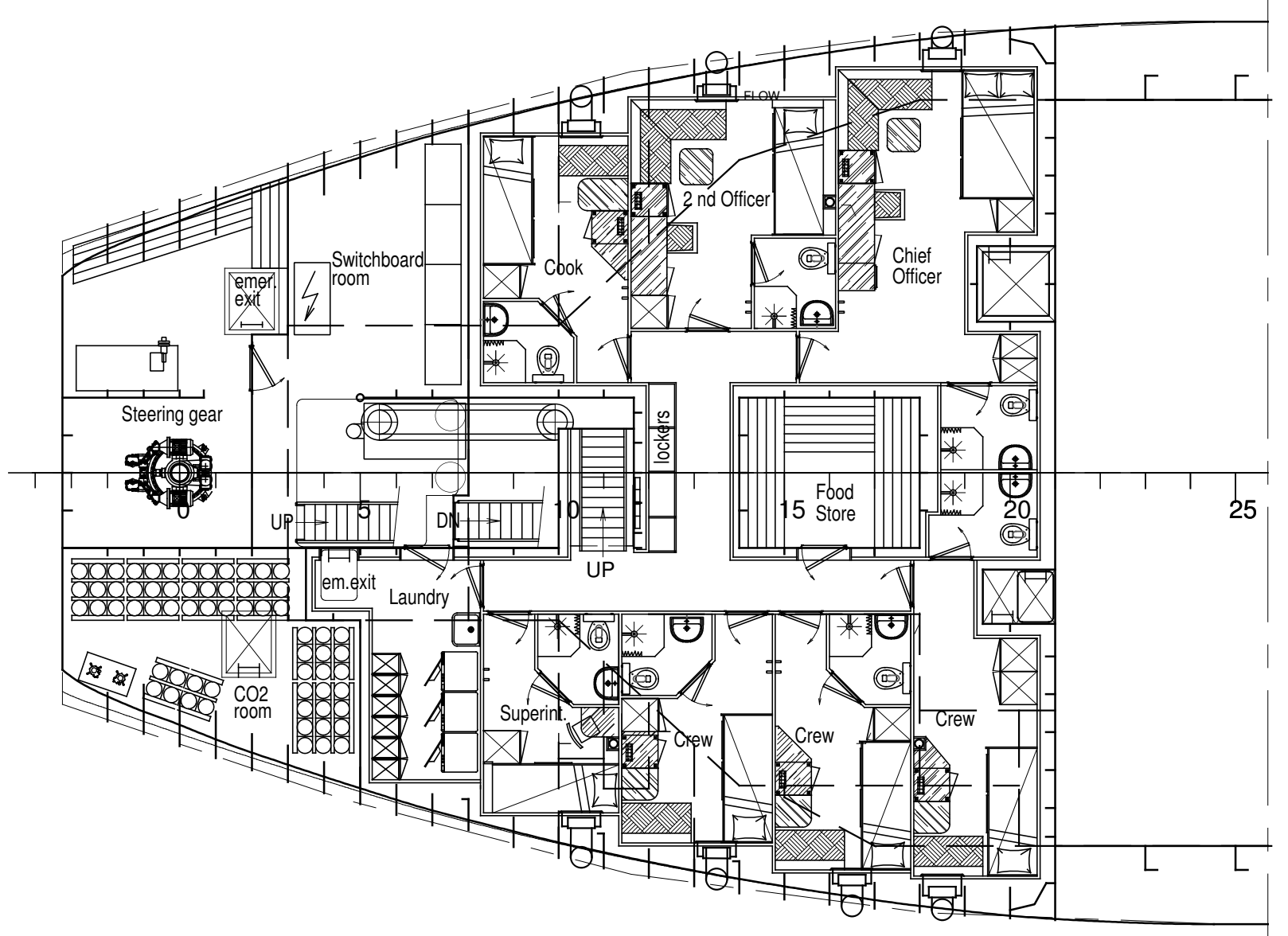
MAINDECK 9050 Above base



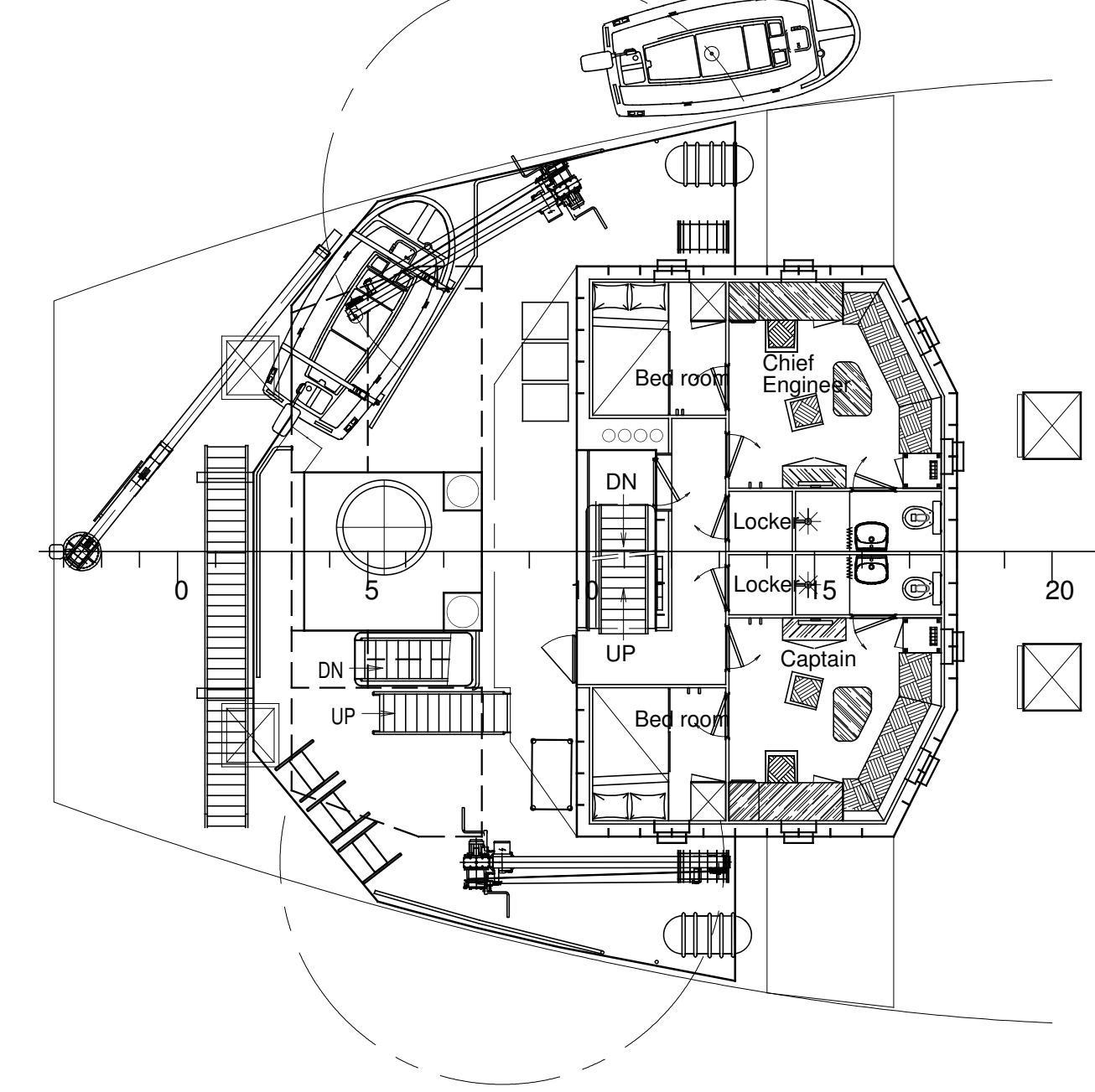
DECK 12000 Above base



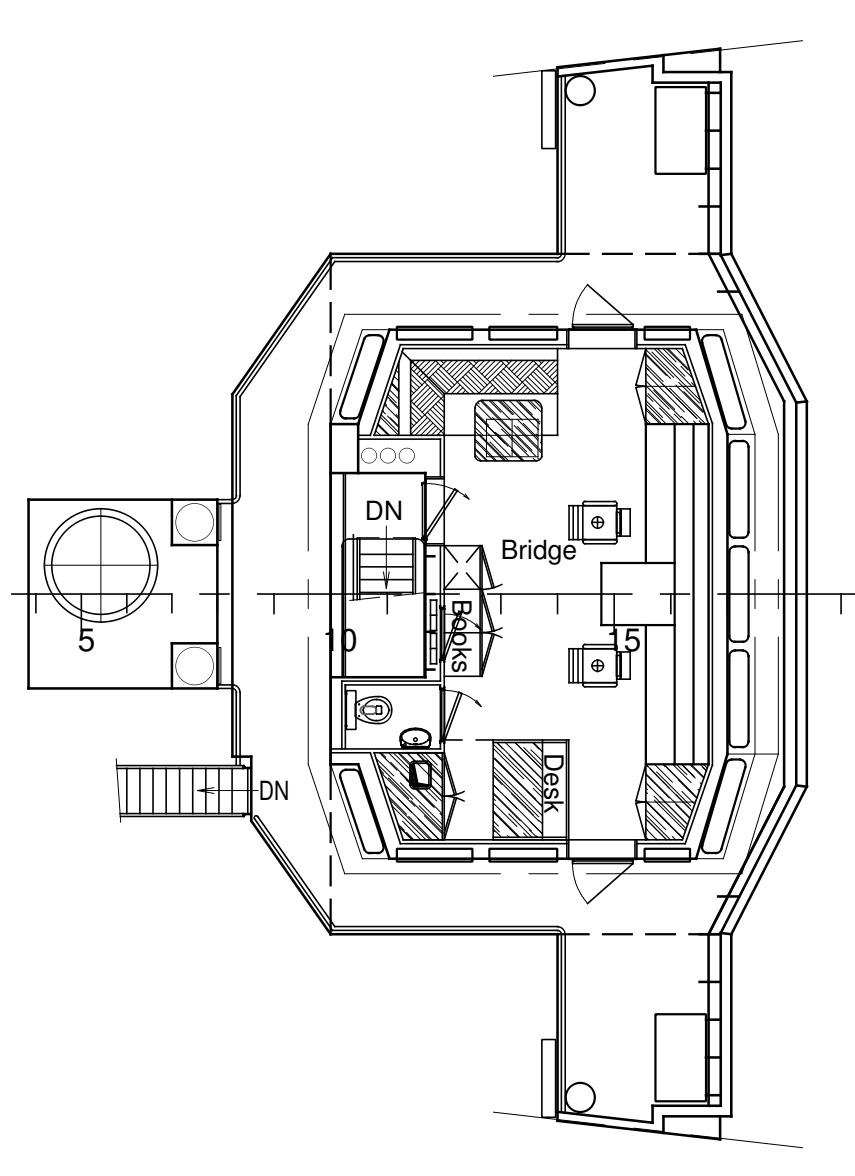
TWEENDECK 6350 Above base



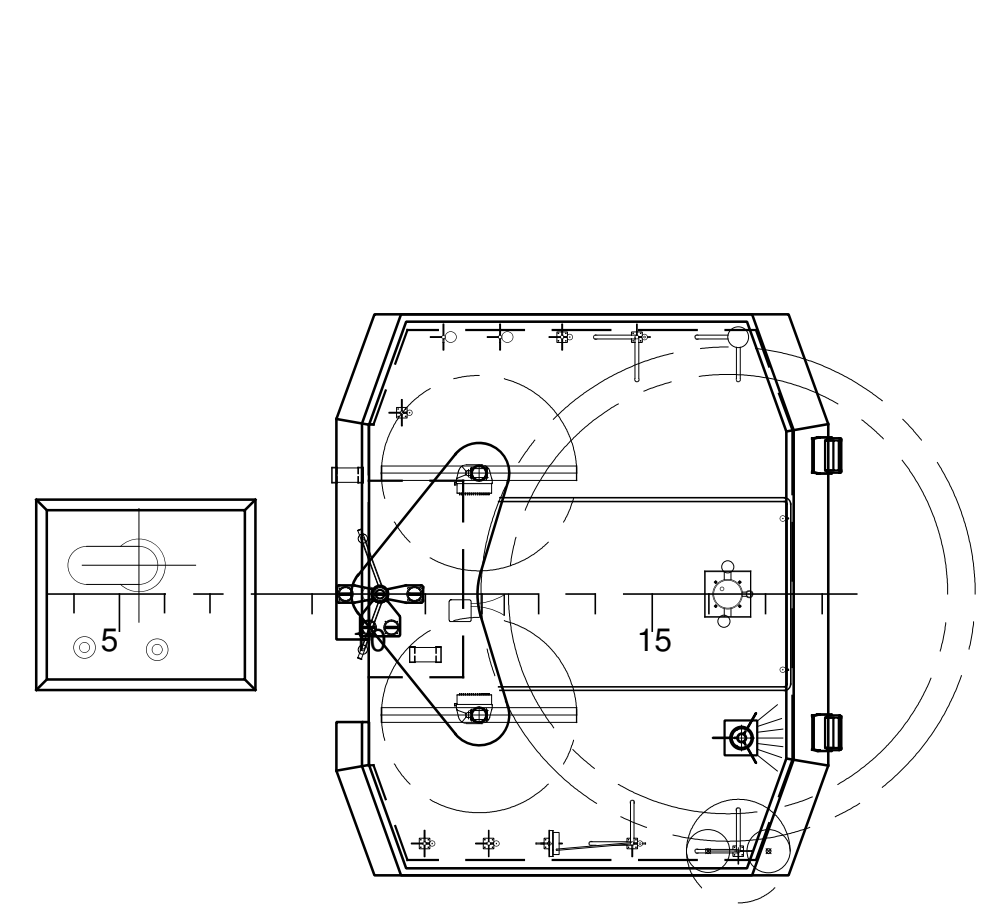
BOATDECK 11650 Above base



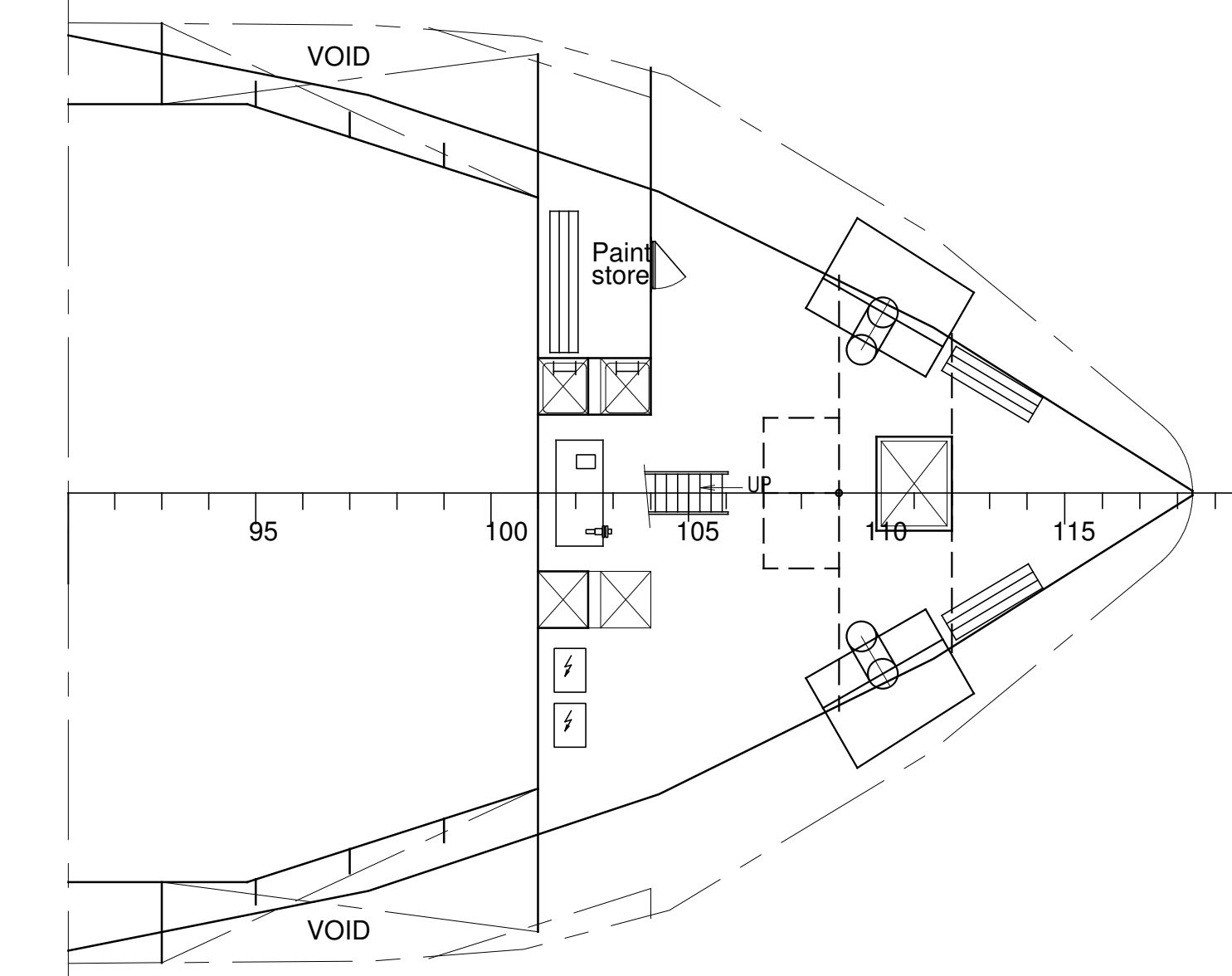
BRIDGEDECK 14250 Above base



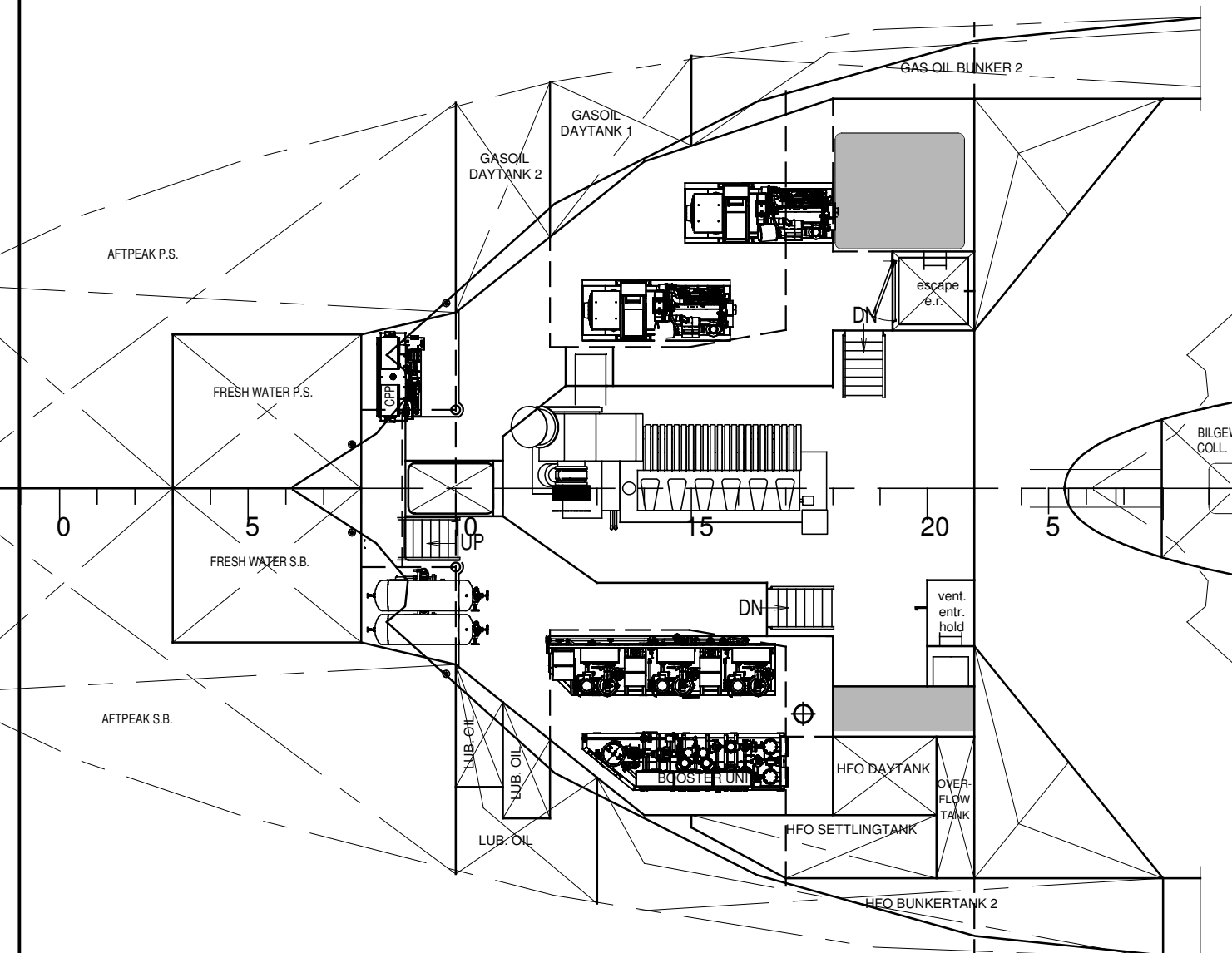
TOPDECK 16850 Above base



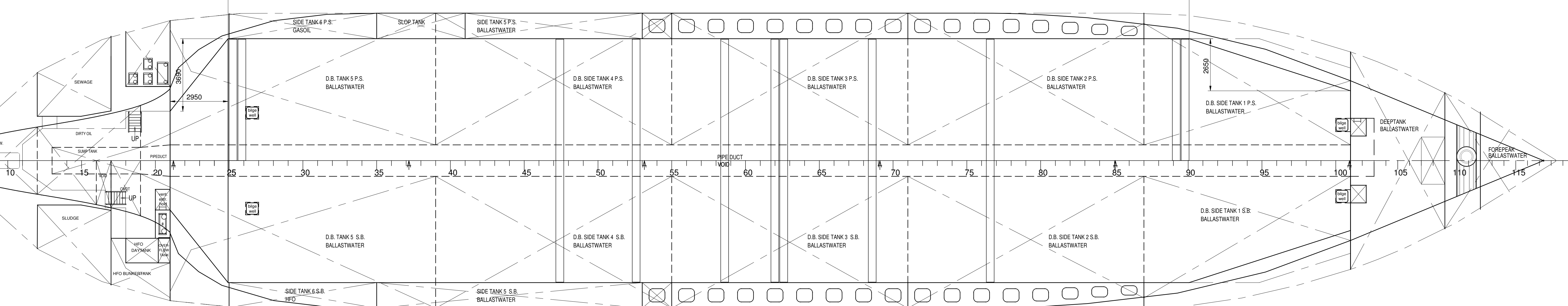
MAINDECK 7300 Above base



E.R. DECK 3650 Above base



TANKTOP 1100 Above base



MAIN PARTICULARS

Length over all	86.93 m.
Length between perpendiculars	84.98 m.
Length acc. loadline	84.98 m.
Breadth moulded	15.00 m.
Depth	7.15 m.
Design draught	6.35 m.
* Deadweight	5169 ton
* Hold capacity	221.000 cbft.
Tanktop area	685 m2
Tonnage (acc. conv.1969)	2999 GT
Tank capacities : HFO	abt. 109 m3
Gasoil	abt. 95 m3
Fresh water	abt. 32 m3
Ballastwater	abt. 1870 m3
Main Engine Mak 6M25	1740 kW
Trial Speed	abt. 12.5 Kn

* = Grainbulkheads not on board

PROJECT DESCRIPTION	MATERIAL	DIMENSION	REMARKS
Royal Bodewes Werkade 22, 9601 LG Hoogezand The Netherlands Phone: +31 598 393151 E-mail: info@royalbodewes.com Web: www.royalbodewes.com			
DRAWING DESCRIPTION: General Arrangement 5100 Dwt		DRAWING NUMBER: 723-000-001/0	
DATE: 15-06-2015	SHEET: 1	TOTAL SHEETS: 1	SCALE: 1:100
COPYRIGHT RESERVED			DATE: 15-06-2015