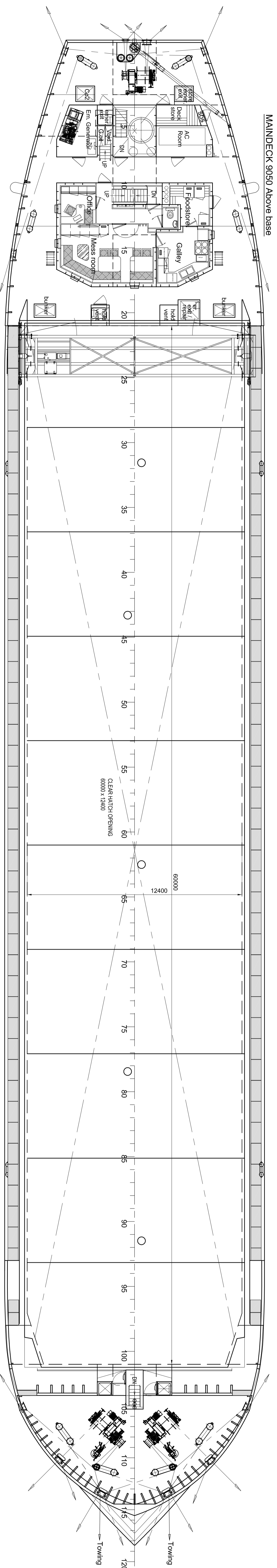
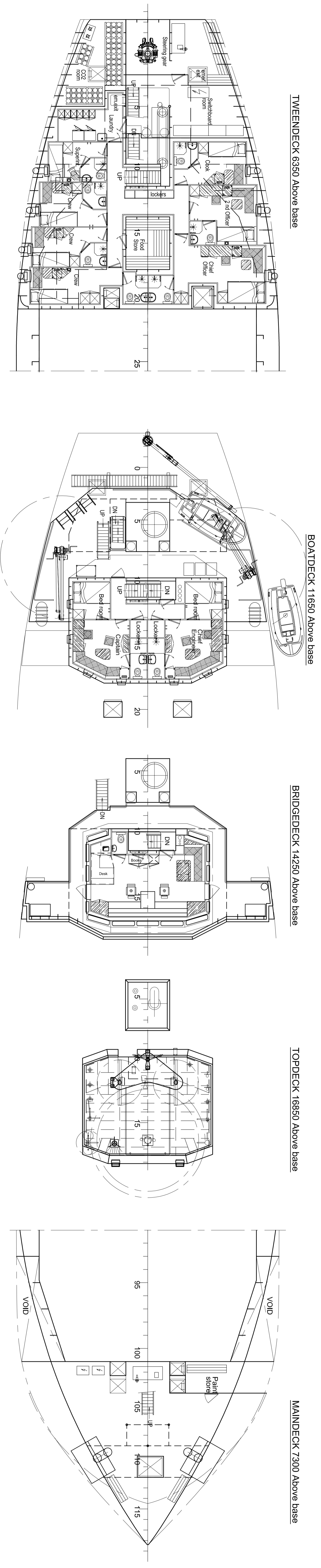


CROSS SECTION



DECK 11900 Above base



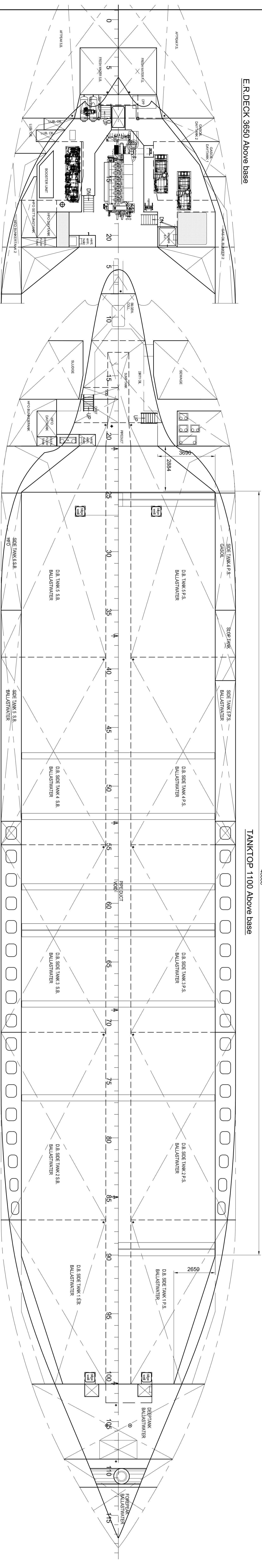
TWEENDECK 63350 Above base

BOATDECK 11650 Above base

BRIDGEDECK 11250 Above base

TOPDECK 16850 Above base

MAINDECK 7300 Above base



E.R. DECK 3650 Above base

TANKTOP 1100 Above base

MAIN PARTICULARS

Length over all	86,93 m.
Length between perpendiculars	84,98 m.
Length acc. loadline	82,845 m.
Breadth moulded	15,00 m.
Depth	7,17 m.

* Design draught abt. 6,35 m.

* Deadweight abt. 5100 ton

* Hold capacity 221.000 cdt.

Tanktop area 6885 m²

Tonnage (acc. conv. 1989) 2999 GT

Tank capacities : HFO abt. 109 m³

Gasoil abt. 95 m³

Fresh water abt. 32 m³

Ballastwater abt. 1870 m³

Main Engine Mak 6M25 1740 kW

Trial Speed abt. 12,5 kn

* = Gerdiensthandels not on board

Project description: Royal Bodevies 1100 Singapore

BODEVIES
 Phone: +31 598 30131
 Email: info@royal-bodevies.com
 Website: www.royal-bodevies.com

General Arrangement 5100 Dwt
 DRAWING NUMBER: 721-000-000-001
 DATE: 10/2014